

DAN RINEHART TAXIDERMY SUPPLY

*Revolutionary Products
Never Seen Before!*

Mounted by
Steve Henthorn

Gene Smith
World Champion
Whitetail Manikins
Pages 19 & 20

Steve Henthorn
International
Champion
Bird Manikins
Page 21

Featuring
the **NEW**
Dan Rinehart's



AQUA PRODUCTS
Fusion of Technology & Nature



The Most Accurate Fish Eyes & Manikins EVER!

Revolutionary Products Never Seen Before!

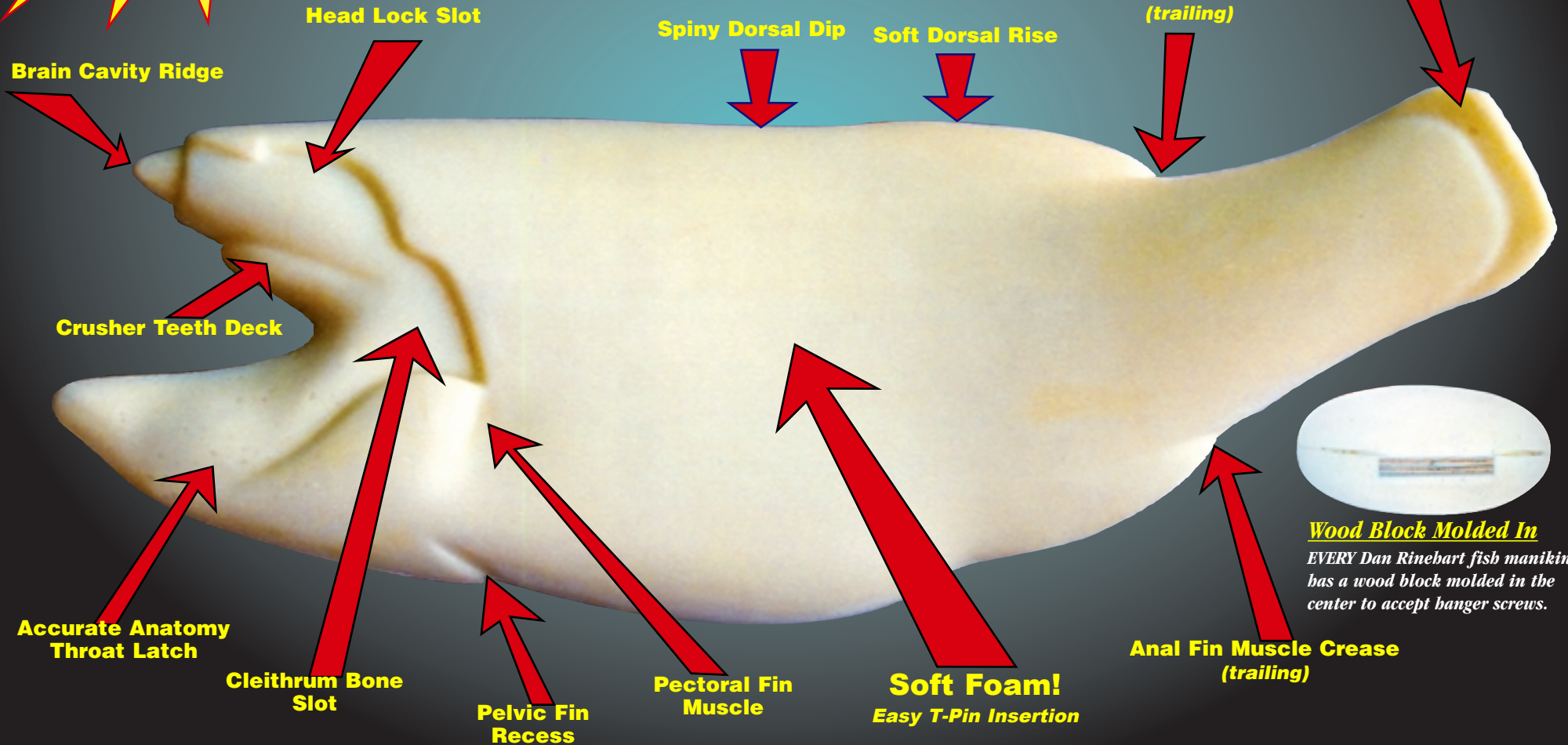
Dan Rinehart's

AQUA FORMS

The Most Advanced Fish Manikins in Taxidermy

The Difference is in the Detail!

NEW!
The Most Accurate Fish Manikin EVER!!



Wood Block Molded In
EVERY Dan Rinehart fish manikin has a wood block molded in the center to accept hanger screws.

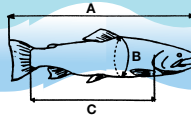


Largemouth Bass

Manikins and AQUA EYES

Tail up and tail down

A = Full length of fish
B = Thickest girth of fish
C = From cleithrum bone to tail juncture



Largemouth Bass Tail Up

Description	A Length	B Girth	C Cleithrum	Sug. AQUA EYE	Price
LM14LU	14	9%	8%	14mm	\$10.60
LM14RU	14	9%	8%	14mm	\$10.60
LM15LU	15	10%	8%	14mm	\$10.60
LM15RU	15	10%	8%	14mm	\$10.60
LM16LU	16	10%	9%	14mm	\$11.20
LM16RU	16	10%	9%	14mm	\$11.20
LM17LU	17	11%	9%	16mm	\$11.20
LM17RU	17	11%	9%	16mm	\$11.20
LM18LU	18	12%	10%	16mm	\$11.20
LM18RU	18	12%	10%	16mm	\$11.20
LM19LU	19	12%	11	18mm	\$11.80
LM19RU	19	12%	11	18mm	\$11.80
LM20LU	20	13%	11%	18mm	\$11.80
LM20RU	20	13%	11%	18mm	\$11.80
LM21LU	21½	14%	12%	18mm	\$12.35
LM21RU	21½	14%	12%	18mm	\$12.35
LM22LU	22	14%	12%	20mm	\$12.35
LM22RU	22	14%	12%	20mm	\$12.35
LM23LU	23	15%	13%	20mm	\$12.65
LM23RU	23	15%	13%	20mm	\$12.65
LM24LU	24	16%	13%	20mm	\$13.25
LM24RU	24	16%	13%	20mm	\$13.25



"Original Series"
Above Water Coloration
AQUA EYES
Largemouth Bass

10mm - 12mm \$4.95
14mm - 18mm \$5.45
20mm - \$5.95

top profile side profile

Largemouth Bass Tail Down

Description	A Length	B Girth	C Cleithrum	Sug. AQUA EYE	Price
LM14LD	14	9%	8%	14mm	\$10.60
LM14RD	14	9%	8%	14mm	\$10.60
LM15LD	15	10%	8%	14mm	\$10.60
LM15RD	15	10%	8%	14mm	\$10.60
LM16LD	16	11%	9%	14mm	\$11.20
LM16RD	16	11%	9%	14mm	\$11.20
LM17LD	17	11%	9%	16mm	\$11.20
LM17RD	17	11%	9%	16mm	\$11.20
LM18LD	18	12%	10%	16mm	\$11.20
LM18RD	18	12%	10%	16mm	\$11.20
LM19LD	19	13%	11	18mm	\$11.80
LM19RD	19	13%	11	18mm	\$11.80
LM20LD	20	14	11%	18mm	\$11.80
LM20RD	20	14	11%	18mm	\$11.80
LM21LD	21½	14%	12%	18mm	\$12.35
LM21RD	21½	14%	12%	18mm	\$12.35
LM22LD	22	15%	12%	20mm	\$12.35
LM22RD	22	15%	12%	20mm	\$12.35
LM23LD	23	16	13%	20mm	\$12.65
LM23RD	23	16	13%	20mm	\$12.65
LM24LD	24	16%	13%	20mm	\$13.25
LM24RD	24	16%	13%	20mm	\$13.25



Revolutionary Product Never Seen Before!

AQUA Patent Pending

BELLY

Spawning Largemouth Bass Bellies

NEW!
Bellies for tail up and tail down largemouth bass manikins



Dan Rinehart Introduces ANOTHER Revolutionary Concept and Product!

The New and Revolutionary Aqua Belly system makes it possible to increase the girth of the fish while keeping all the fins in central alignment. How is it possible to increase girth while keeping the fins centrally aligned? This can be explained by a concept I'll title "Limited Girth Expansion" (LGE). LGE is based on the concept that fish girth expands between, and only between the pectoral fin bases and beginning ray of the anal fin. The leading edge of the anal fin is constrained by the skeletal structure of the fish to a given, non-changing girth. Being that the anatomical structure between the pelvic fin bases and leading edge of the anal fin lacks skeletal structure, the girth in this area is able to increase or decrease given differing diets and spawning levels. The New Aqua Belly add-on is based on the LGE concept which enables the taxidermist, for the first time, to increase the girth of a fish mount without misaligning the fins.

Dan Rinehart

AQUA BELLY Catalog #	Fits AQUA FORM Tail Up	Fits AQUA FORM Tail Down	Measurement Adds+Girth	Price
BLM14L	LM14LU	LM14LD	1"+	\$3.50
BLM14R	LM14RU	LM14RD	1"+	\$3.50
BLM15L	LM15LU	LM15LD	1"½+	\$3.50
BLM15R	LM15RU	LM15RD	1"½+	\$3.50
BLM16L	LM16LU	LM16LD	1"¾+	\$3.65
BLM16R	LM16RU	LM16RD	1"¾+	\$3.65
BLM17L	LM17LU	LM17LD	1"¾+	\$3.65
BLM17R	LM17RU	LM17RD	1"¾+	\$3.65
BLM18L	LM18LU	LM18LD	1"¾+	\$3.75
BLM18R	LM18RU	LM18RD	1"¾+	\$3.75
BLM19L	LM19LU	LM19LD	1"¾+	\$3.75
BLM19R	LM19RU	LM19RD	1"¾+	\$3.75
BLM20L	LM20LU	LM20LD	1"¾+	\$3.75
BLM20R	LM20RU	LM20RD	1"¾+	\$3.85
BLM21L	LM21LU	LM21LD	1"¾+	\$3.85
BLM21R	LM21RU	LM21RD	1"¾+	\$3.85
BLM22L	LM22LU	LM22LD	1"¾+	\$3.85
BLM22R	LM22RU	LM22RD	1"¾+	\$3.85
BLM23L	LM23LU	LM23LD	1"¾+	\$3.95
BLM23R	LM23RU	LM23RD	1"¾+	\$3.95
BLM24L	LM24LU	LM24LD	1"¾+	\$3.95
BLM24R	LM24RU	LM24RD	1"¾+	\$3.95

AQUA BELLY is EASY!



Step 1: Apply hotglue to the inside edge of the Aqua Belly.



Step 2: Align the Aqua Belly between the pelvic fin bases and leading edge of the anal fin. Press and hold in place until hotglue cools.



Step 3: Sand the edge of the Aqua Belly.



Step 4: Smooth Aqua Belly to manikin with white Critter Clay.

1-866-296-AQUA (2782)

Walleye

Manikins and AQUA EYES

Tail up and tail down

Walleye Tail Up

Revolutionary Products Never Seen Before!

Description	A Length	B Girth	C Cleithrum	Sug. AQUA EYE	Price
WUR21	21	11%	14%	16mm	\$9.70
WUL21	21	11%	14%	16mm	\$9.70
WUR22	22	12%	15	16mm	\$10.60
WUL22	22	12%	15	16mm	\$10.60
WUR23	23	12%	15%	16mm	\$11.20
WUL23	23	12%	15%	16mm	\$11.20
WUR24	24	13%	16%	18mm	\$11.80
WUL24	24	13%	16%	18mm	\$11.80
WUR25	25	13%	17	18mm	\$12.35
WUL25	25	13%	17	18mm	\$12.35
WUR26	26	14%	17%	18mm	\$13.25
WUL26	26	14%	17%	18mm	\$13.25
WUR27	27	14%	18%	20mm	\$13.80
WUL27	27	14%	18%	20mm	\$13.80
WUR28	28	15%	19	20mm	\$14.40
WUL28	28	15%	19	20mm	\$14.40
WUR29	29	16%	19%	20mm	\$14.95
WUL29	29	16%	19%	20mm	\$14.95
WUR30	30	16%	20%	22mm	\$15.90
WUL30	30	16%	20%	22mm	\$15.90
WUR31	31	17%	21	22mm	\$16.45
WUL31	31	17%	21	22mm	\$16.45



"AQUA FORM" Manikin



Walleye mounted by Dan Rinehart



"Original Series" Above Water Coloration AQUA EYES

Walleye

10mm - 12mm \$5.45
14mm - 18mm \$5.95
20mm - \$6.45
22mm - \$7.95



top profile side profile

Clear Pupil with Reflective Disc



"Traditional Series" Under Water Coloration AQUA EYES

Walleye

16mm - 18mm \$6.45
20mm - \$6.95
22mm - \$8.45

Reflective Disc \$.95 (pair)

World's BEST Walleye Eye - GUARANTEED!



"AQUA FORM" Manikin



Walleye mounted by Don Rich

Walleye Tail Down

Description	A Length	B Girth	C Cleithrum	Sug. AQUA EYE	Price
WDR21	21	11%	14%	16mm	\$9.70
WDL21	21	11%	14%	16mm	\$9.70
WDR22	22	12%	15	16mm	\$10.60
WDL22	22	12%	15	18mm	\$10.60
WDR23	23	12%	15%	16mm	\$11.20
WDL23	23	12%	15%	16mm	\$11.20
WDR24	24	13%	16%	18mm	\$11.80
WDL24	24	13%	16%	18mm	\$11.80
WDR25	25	13%	17	18mm	\$12.35
WDL25	25	13%	17	18mm	\$12.35
WDR26	26	14%	17%	18mm	\$13.25
WDL26	26	14%	17%	18mm	\$13.25
WDR27	27	14%	18%	20mm	\$13.80
WDL27	27	14%	18%	20mm	\$13.80
WDR28	28	15%	19	20mm	\$14.40
WDL28	28	15%	19	20mm	\$14.40
WDR29	29	16%	19%	20mm	\$14.95
WDL29	29	16%	19%	20mm	\$14.95
WDR30	30	16%	20%	22mm	\$15.90
WDL30	30	16%	20%	22mm	\$15.90
WDR31	31	17%	21	22mm	\$16.45
WDL31	31	17%	21	22mm	\$16.45

Smallmouth Bass

Manikins and AQUA EYES

Tail up and tail down

Smallmouth Bass Tail Up

Description	A Length	B Girth	C Cleithrum	Sug. AQUA EYE	Price
SMB14LU	14	9%	8%	12mm	\$10.60
SMB14RU	14	9%	8%	12mm	\$10.60
SMB15LU	15	10%	9%	12mm	\$10.60
SMB15RU	15	10%	9%	12mm	\$10.60
SMB16LU	16	11	9%	14mm	\$11.20
SMB16RU	16	11	9%	14mm	\$11.20
SMB17LU	17	11%	10%	14mm	\$11.20
SMB17RU	17	11%	10%	14mm	\$11.20
SMB18LU	18	12%	11%	16mm	\$11.80
SMB18RU	18	12%	11%	16mm	\$11.80
SMB19LU	19	13%	11%	16mm	\$11.80
SMB19RU	19	13%	11%	16mm	\$11.80
SMB20LU	20	13%	12%	16mm	\$11.80
SMB20RU	20	13%	12%	16mm	\$11.80
SMB21LU	21	14	13	18mm	\$12.35
SMB21RU	21	14	13	18mm	\$12.35
SMB22LU	22	15%	13%	18mm	\$12.35
SMB22RU	22	15%	13%	18mm	\$12.35
SMB23LU	23	15%	14%	18mm	\$12.95
SMB23RU	23	15%	14%	18mm	\$12.95
SMB24LU	24	16%	14%	18mm	\$12.95
SMB24RU	24	16%	14%	18mm	\$12.95



"AQUA FORM" Manikin



Smallmouth mounted by Dan Rinehart



"Original Series" Above Water Coloration AQUA EYES

Smallmouth

10mm - 12mm \$4.95
14mm - 18mm \$5.45



top profile side profile



"Traditional Series" Under Water Coloration AQUA EYES

Smallmouth

10mm - 12mm \$4.95
14mm - 18mm \$5.45

Smallmouth Bass Tail Down

Description	A Length	B Girth	C Cleithrum	Sug. AQUA EYE	Price
SMB14LD	14	9%	8%	12mm	\$10.60
SMB14RD	14	9%	8%	12mm	\$10.60
SMB15LD	15	10%	9%	12mm	\$10.60
SMB15RD	15	10%	9%	12mm	\$10.60
SMB16LD	16	11%	9%	14mm	\$11.20
SMB16RD	16	11%	9%	14mm	\$11.20
SMB17LD	17	12	10%	14mm	\$11.20
SMB17RD	17	12	10%	14mm	\$11.20
SMB18LD	18	12%	11%	16mm	\$11.80
SMB18RD	18	12%	11%	16mm	\$11.80
SMB19LD	19	13%	11%	16mm	\$11.80
SMB19RD	19	13%	11%	16mm	\$11.80
SMB20LD	20	14	12%	16mm	\$11.80
SMB20RD	20	14	12%	16mm	\$11.80
SMB21LD	21	14%	13	18mm	\$12.35
SMB21RD	21	14%	13	18mm	\$12.35
SMB22LD	22	15%	13%	18mm	\$12.35
SMB22RD	22	15%	13%	18mm	\$12.35
SMB23LD	23	16%	14%	18mm	\$12.95
SMB23RD	23	16%	14%	18mm	\$12.95
SMB24LD	24	16%	14%	18mm	\$12.95
SMB24RD	24	16%	14%	18mm	\$12.95



"AQUA FORM" Manikin



Smallmouth mounted by Dan Rinehart

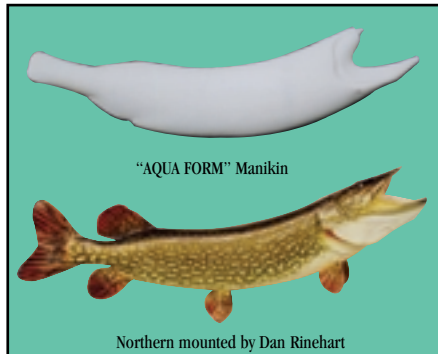


Northern Pike/Musky

Manikins and AQUA EYES *Musky Eyes*
Pages 11 & 12

Northern Pike/Musky Tail Up

Description	A Length	B Girth	C Cleithrum	Sug. AQUA EYE	Price
NP32LU	32	13%	20%	18mm	\$19.10
NP32RU	32	13%	20%	18mm	\$19.10
NP33LU	33	14%	21	18mm	\$19.45
NP33RU	33	14%	21	18mm	\$19.45
NP34LU	34	14%	21%	18mm	\$19.70
NP34RU	34	14%	21%	18mm	\$19.70
NP35LU	35	15%	22%	18mm	\$20.25
NP35RU	35	15%	22%	18mm	\$20.25
NP36LU	36	15%	22%	18mm	\$21.20
NP36RU	36	15%	22%	18mm	\$21.20
NP37LU	37	15%	23%	18mm	\$21.75
NP37RU	37	15%	23%	18mm	\$21.75
NP38LU	38	16%	24%	20mm	\$22.30
NP38RU	38	16%	24%	20mm	\$22.30
NP39LU	39	16%	24%	20mm	\$22.95
NP39RU	39	16%	24%	20mm	\$22.95
NP40LU	40	17%	25%	20mm	\$23.50
NP40RU	40	17%	25%	20mm	\$23.50
NP41LU	41	17%	26%	20mm	\$24.10
NP41RU	41	17%	26%	20mm	\$24.10
NP42LU	42	18	26%	20mm	\$25.00
NP42RU	42	18	26%	20mm	\$25.00
NP43LU	43	18½	27%	20mm	\$25.85
NP43RU	43	18½	27%	20mm	\$25.85
NP44LU	44	19	28%	22mm	\$26.50
NP44RU	44	19	28%	22mm	\$26.50
NP45LU	45	19½	28%	22mm	\$27.05
NP45RU	45	19½	28%	22mm	\$27.05



"AQUA FORM" Manikin

Northern mounted by Dan Rinehart

"Original Series"
Above Water Coloration
AQUA EYES
Northern

6mm - 12mm \$4.95
14mm - 18mm \$5.45
20mm - \$5.95
22mm - \$7.45

top profile side profile

"Traditional Series"
Under Water Coloration
AQUA EYES
Northern

10mm - 12mm \$4.95
14mm - 18mm \$5.45
20mm - \$5.95
22mm - \$7.45

AQUA EYES CAPTURES NATURE!

Through years of research and study, Dan Rinehart has captured the exact LIVE shape of a fish eye in these new Aqua Eyes. From the Side-Profile, each Aqua Eye is a slight oval matching the precise shape of the fish in nature. The Top-Profile incorporates the realistic forward-arch of a live fish eye. Proper shape of the new Aqua Eyes results in easier, faster and more accurate fish eye setting for you!

Mounted Northern "AQUA EYE"



"Actual Northern Eye"



Perch

Manikins and AQUA EYES

Perch Tail Up

Revolutionary Products Never Seen Before!

Description	A Length	B Girth	C Cleithrum	Sug. AQUA EYE	Price
YP10LU	10	6%	6%	10mm	\$7.10
YP10RU	10	6%	6%	10mm	\$7.10
YP10½LU	10½	7%	7%	10mm	\$7.10
YP10½RU	10½	7%	7%	10mm	\$7.10
YP11LU	11	7%	7%	10mm	\$7.10
YP11RU	11	7%	7%	12mm	\$7.10
YP11½LU	11½	7%	7%	12mm	\$7.10
YP11½RU	11½	7%	7%	12mm	\$7.10
YP12LU	12	8%	8%	12mm	\$7.95
YP12RU	12	8%	8%	12mm	\$7.95
YP12½LU	12½	8%	8%	12mm	\$7.95
YP12½RU	12½	8%	8%	12mm	\$7.95
YP13LU	13	8%	8%	14mm	\$8.55
YP13RU	13	8%	8%	14mm	\$8.55
YP13½LU	13½	9%	9%	14mm	\$8.55
YP13½RU	13½	9%	9%	14mm	\$8.55
YP14LU	14	9%	9%	14mm	\$9.15
YP14RU	14	9%	9%	14mm	\$9.15
YP14½LU	14½	9%	9%	14mm	\$9.15
YP14½RU	14½	9%	9%	14mm	\$9.15
YP15LU	15	10%	10%	14mm	\$9.80
YP15RU	15	10%	10%	14mm	\$9.80
YP15½LU	15½	10%	10%	14mm	\$9.80
YP15½RU	15½	10%	10%	14mm	\$9.80
YP16LU	16	10%	10%	16mm	\$10.60
YP16RU	16	10%	10%	16mm	\$10.60
YP16½LU	16½	11%	11%	16mm	\$10.60
YP16½RU	16½	11%	11%	16mm	\$10.60



"AQUA FORM" Manikin

Perch mounted by Dan Rinehart

"Original Series"
Above Water Coloration
AQUA EYES
Perch

6mm - 12mm \$4.95
14mm - \$5.45
16mm - \$5.95

top profile side profile



Don Rich
Nature's Touch Taxidermy
Janesville, Wisconsin

"Before Dan Rinehart came out with these NEW fish manikins, I thought that John Rinehart fish manikins were good. I was right, they are good, but Dan's are GREAT! Because of the precise fit and eye-appealing poses, I choose Dan's manikin over all others!"

Don Rich



Bluegill & Crappie

Manikins and AQUA EYES

Bluegill Tail Up

Description	Length	Girth	Cleithrum	Sug. AQUA EYE	Price
BG6½LU	6½	6½	3½	8mm	\$5.90
BG6½RU	6½	6½	3½	8mm	\$5.90
BG7LU	7	6½	4½	8mm	\$5.90
BG7RU	7	6½	4½	8mm	\$5.90
BG7½LU	7½	7½	4½	10mm	\$5.90
BG7½RU	7½	7½	4½	10mm	\$5.90
BG8LU	8	7½	4½	10mm	\$5.90
BG8RU	8	7½	4½	10mm	\$5.90
BG8½LU	8½	8½	5½	10mm	\$5.90
BG8½RU	8½	8½	5½	10mm	\$5.90
BG9LU	9	8½	5½	10mm	\$7.10
BG9RU	9	8½	5½	10mm	\$7.10
BG9½LU	9½	9	5½	12mm	\$7.10
BG9½RU	9½	9	5½	12mm	\$7.10
BG10LU	10	9½	6	12mm	\$7.10
BG10RU	10	9½	6	12mm	\$7.10
BG10½LU	10½	10	6½	12mm	\$7.10
BG10½RU	10½	10	6½	12mm	\$7.10
BG11LU	11	10½	6½	14mm	\$7.10
BG11RU	11	10½	6½	14mm	\$7.10
BG11½LU	11½	10½	7	14mm	\$7.10
BG11½RU	11½	10½	7	14mm	\$7.10
BG12LU	12	11½	7½	14mm	\$8.25
BG12RU	12	11½	7½	14mm	\$8.25
BG12½LU	12½	11½	7½	14mm	\$8.25
BG12½RU	12½	11½	7½	14mm	\$8.25



Bluegill mounted by Dan Rinehart



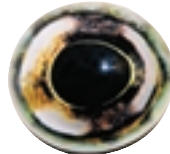
“Original Series”
Above Water Coloration
Bluegill-Red
6mm - 12mm \$4.95
14mm - 16mm \$5.45



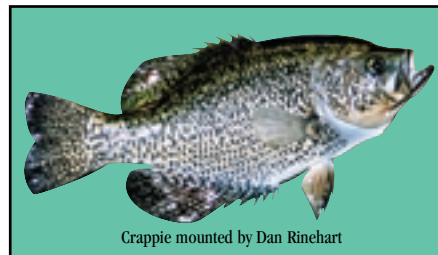
“Original Series”
Above Water Coloration
Bluegill-Brownish Golden
6mm - 12mm \$4.95
14mm - 16mm \$5.45

“Original Series”
Above Water Coloration
White Crappie
8mm - 12mm \$4.95
14mm - 18mm \$5.45
20mm - \$5.95
22mm - \$7.45

“Traditional”
Under Water Coloration
White Crappie
8mm - 12mm \$4.95
14mm - 18mm \$5.45
20mm - \$5.95
22mm - \$7.45



“Traditional Series”
Under Water Coloration
Black Crappie
8mm - 12mm \$4.95
14mm - 16mm \$5.45



Crappie mounted by Dan Rinehart

Crappie Tail Up - White/Black

Description	Length	Girth	Cleithrum	Sug. AQUA EYE	Price
CR11½RU	11½	9	6½	14mm	\$9.40
CR11½LU	11½	9	6½	14mm	\$9.40
CR12RU	12	9½	7	14mm	\$9.70
CR12LU	12	9½	7	14mm	\$9.70
CR12½RU	12½	9½	7½	14mm	\$9.70
CR12½LU	12½	9½	7½	14mm	\$9.70
CR13RU	13	10½	7½	14mm	\$10.05
CR13LU	13	10½	7½	14mm	\$10.05
CR13½RU	13½	10½	8	14mm	\$10.05
CR13½LU	13½	10½	8	14mm	\$10.05
CR14RU	14	11	8½	14mm	\$10.05
CR14LU	14	11	8½	14mm	\$10.05
CR14½RU	14½	11½	8½	16mm	\$10.05
CR14½LU	14½	11½	8½	16mm	\$10.05
CR15RU	15	11½	8½	16mm	\$10.30
CR15LU	15	11½	8½	16mm	\$10.30
CR15½RU	15½	12½	9½	16mm	\$10.30
CR15½LU	15½	12½	9½	16mm	\$10.30
CR16RU	16	12½	9½	16mm	\$10.30
CR16LU	16	12½	9½	16mm	\$10.30
CR16½RU	16½	12½	9½	16mm	\$10.30
CR16½LU	16½	12½	9½	16mm	\$10.30
CR17RU	17	13½	10	18mm	\$10.60
CR17LU	17	13½	10	18mm	\$10.60
CR17½RU	17½	13½	10½	18mm	\$10.60
CR17½LU	17½	13½	10½	18mm	\$10.60



Dan's Freeze-Dried Fish

Finished & Unfinished

Revolutionary Products Never Seen Before!

Northern mounted by Dan Rinehart with freeze dried perch



CRAPPIE, BLUEGILL, PERCH, MINNOWS

Excellent quality freeze-dried fish to compliment your taxidermy work. Perfect for adding quality and excitement to your fish mount or habitat scene. Simply attach a freeze-dried fish to your mounted fish and your customer will be amazed! Each unfinished fish includes hand-carded fins, eye sockets ready for eye placement and beautifully preserved anatomy. Take ALL the work out of your fish by ordering a finished freeze-dried fish. Each finished fish includes fully airbrushed coloration, gloss clear coat, fleshy fin coating and natural eye set.

Freeze-Dried Fish: Finished

Species	Size	Direction	Price
Perch	3"-7"	Left	\$19.95
Perch	3"-7"	Right	\$19.95
Bluegill	3"-7"	Left	\$19.95
Bluegill	3"-7"	Right	\$19.95
Crappie	3"-7"	Left	\$19.95
Crappie	3"-7"	Right	\$19.95
Minnow	3"-5"	Left	\$19.95
Minnow	3"-5"	Right	\$19.95

Freeze-Dried Fish: Unfinished

Species	Size	Direction	Price
Perch	3"-7"	Left	\$9.95
Perch	3"-7"	Right	\$9.95
Bluegill	3"-7"	Left	\$9.95
Bluegill	3"-7"	Right	\$9.95
Crappie	3"-7"	Left	\$9.95
Crappie	3"-7"	Right	\$9.95
Minnow	3"-5"	Left	\$9.95
Minnow	3"-5"	Right	\$9.95

Dan Rinehart's Wholesale Fish Taxidermy

Get your fish packed-up and send them off to Dan.

For only \$6/inch warmwater, \$6.50/inch coldwater and \$7.00/saltwater and specialty you can have Dan take care of your fish taxidermy!

When sending fish: **ALWAYS SHIP ON A MONDAY!** Wrap each fish in a fully-saturated towel, place in a plastic bag and freeze. On the day of shipping, wrap fish together with duct tape and place in the center of a cardboard box.

Tightly pack insulation 360 degrees around the fish.

Place a 50% deposit and letter containing your contact information, as well as fish mounting directions, in a Zip-Lock bag and place in box with fish.

Take directly to a UPS shipping station and send 2nd Day ground.

Have your fish mounted by International Taxidermy Champion, Dan Rinehart

THE MOST ACCURATE FISH EYES EVER!

"Original Series"

Above Water Coloration

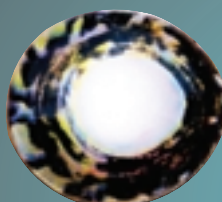
Aqua Eyes are the first fish eyes in the world to use "Photographic Re-Imaging technology." This new technology fuses a high-definition 3-D photograph of the "LIVE" fish eye into a clear lens. The "Original Series" Aqua Eyes are the exact pattern and coloration of the fish eye above water. Due to direct sunlight, above water coloration is more vibrant than the underwater coloration of the "Traditional Series" Aqua Eyes (shown on the next page). These new "Original Series" Aqua Eyes will add lifelike vibrance to your mount that your customer will notice and appreciate!



Largemouth Bass/Muskie
10mm - 12mm \$4.95
14mm - 18mm \$5.45
20mm - \$5.95



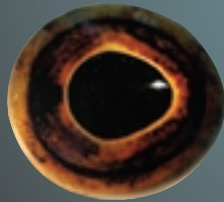
Northern Pike/Perch
6mm - 12mm \$4.95
14mm - 18mm \$5.45
20mm - \$5.95
22mm - \$7.45



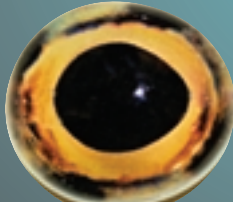
Walleye
10mm - 12mm \$4.95
14mm - 18mm \$5.45
20mm - \$5.95
22mm - \$7.45



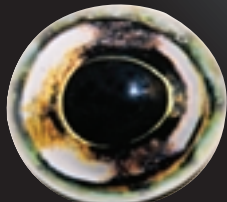
Smallmouth Bass
10mm - 12mm \$4.95
14mm - 18mm \$5.45



Brown Trout
10mm - 12mm \$4.95
14mm - 18mm \$5.45
20mm - \$5.95



Rainbow Trout
8mm - 12mm \$4.95
14mm - 18mm \$5.45
20mm - \$5.95



Crappie/Striper
8mm - 12mm \$4.95
14mm - 18mm \$5.45
20mm - \$5.95
22mm - \$7.45



Silver Trout/Salmon
10mm - 12mm \$4.95
14mm - 18mm \$5.45
20mm - \$5.95



Panfish/Rockbass
6mm - 12mm \$4.95
14mm - 16mm \$5.45



Top Profile



Side Profile

Through years of research and study, Dan Rinehart has captured the exact "LIVE" shape of a fish eye in these new Aqua Eyes. From the Side-Profile, each Aqua Eye is a slight oval matching the precise shape of the fish in nature. The Top-Profile incorporates the realistic forward-arch of a live fish eye. Proper shape of the new Aqua Eyes results in easier, faster and more accurate fish eye setting for you!

This eye is so NEW and Revolutionary that it has been granted a United States Patent (#US D473, 943 S).

"Just wanted to drop a line and say "Aqua Eyes" are AWESOME! Best eyes I've EVER used."

---Ron Butzen

Butzen Taxidermy, Brookfield, WI

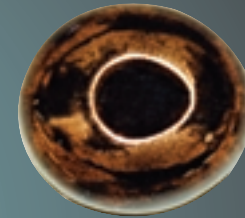
"Traditional Series"

Below Water Coloration

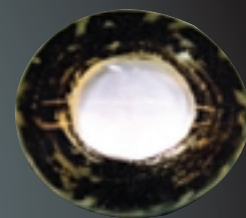
Using advanced "Photographic Re-Imaging" technology, the new "Traditional Series" Aqua Eyes captures the underwater coloration of a fish eye. Water acts as a filter for sun rays. Therefore, everything is less-vibrant underwater. The "Traditional Series" Aqua Eyes provides the lifelike and less-vibrant fish eye coloration of the natural fish swimming underwater. Utilizing the same Lifelike shape of the "Original Series" Aqua Eyes, "Traditional Series" eyes combine a more accurate fit with "Traditional" underwater coloration!



Largemouth Bass
10mm - 12mm \$4.95
14mm - 18mm \$5.45
20mm - \$5.95
22mm - \$7.45



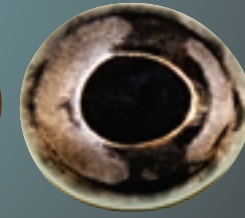
Muskie/Brownish-Gold
10mm - 12mm \$4.95
14mm - 18mm \$5.45
20mm - \$5.95
22mm - \$7.45



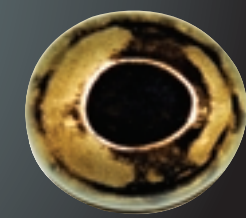
Walleye (Clear Pupil)
16mm - 18mm \$5.95
20mm - \$6.45
22mm - \$7.95
Reflective Disc (pair) \$.95



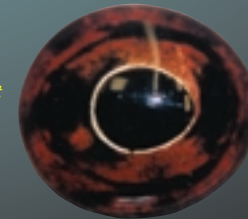
Black Crappie
8mm - 12mm \$4.95
14mm - 16mm \$5.45



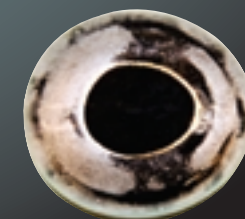
Silver Trout/Salmon
10mm - 12mm \$4.95
14mm - 18mm \$5.45
20mm - \$5.95



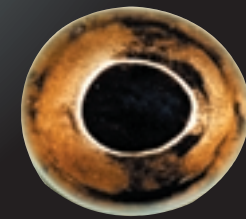
Trout (Greenish Golden)
8mm - 12mm \$4.95
14mm - 18mm \$5.45
20mm - \$5.95



Smallmouth Bass
10mm - 12mm \$4.95
14mm - 18mm \$5.45



Crappie/Striper
8mm - 12mm \$4.95
14mm - 18mm \$5.45
20mm - \$5.95
22mm - \$7.45



Trout (Brownish Golden)
10mm - 12mm \$4.95
14mm - 18mm \$5.45
20mm - \$5.95

Revolutionary Products Never Seen Before! ALL NEW!



Aqua Products

Gloss & Urethane Foam



Aqua Clear

Two Part, 4 to 1 Mix

(Competition Gloss for the Professional Taxidermist)
While mounting over 1,000 fish each year, Dan Rinehart has formulated this new Aqua Clear. This advanced clear-coat provides a higher gloss in less time with easy lacquer thinner clean-up. One coat is all you need to achieve the competition results you desire on your professional work!

Aqua Clear, quart/pint kit.....\$39.99

- **Competition Quality**
- **Easy Mix/Use**
- **Special Formula**
- **Spray-On**

Urethane Foam

Working with urethane foam chemists, Dan has tested and obtained the finest urethane foam for taxidermy use. Whether you are looking for a urethane foam for your manikin alteration or building habitat projects, this new foam offers the highest quality results along with an economical price.
Urethane Foam, two gallon kit.....\$65.95



NEW VIDEO
WORLD TAXIDERMY CHAMPIONSHIPS VIDEO
coverage and commentary by Dan Rinehart

The World Taxidermy Championships is the foremost trade show and competition in the taxidermy industry. Taxidermists from around the World bring mounts of ground-breaking quality. With this NEW video, Dan Rinehart takes you inside the World Championships with personal interviews of new World Champions as well as an overview of the entire trade show. Produced for the American Sportsman, this program provides an informative perspective to the premier taxidermy trade show / competition. Very interesting program for anyone who enjoys taxidermy!

Description	Price
World's Video - 30 min.	\$19.95

Toll-Free

1-866-296-AQUA (2782)



Aqua Products

Fish Mounting Accessories



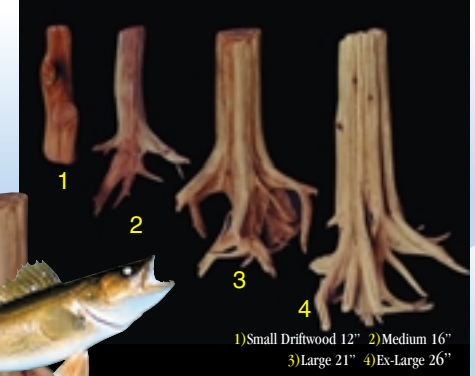
Fish Fleshing Tool

Improve the efficiency and quality of your fish mounts with this handy fish skinning tool. Designed to scrape large and small areas, Dan's scraper makes your fish skinning job easier.
Fish Skinning Tool.....\$6.95



Solid Brass Hangers

This is the most economical and durable hanger on the market. The shiny brass surface is the perfect hanger to complete your quality mount. Great for fish, birds and deerheads.
Brass Hanger (Single).....\$.10/each
Brass Hanger (Dozen).....\$1.15/dozen
Brass Hangers (Gross).....\$12.96



Dan's Driftwood (Solid Cedar!)

You put a lot of time into your mounts and you deserve the BEST driftwood! Dan's solid CEDAR driftwood gives your mount the highest quality at an economical price.
Guaranteed to be the BEST driftwood in taxidermy!

Small 12"\$4.75
Medium 16"\$6.45
Large 21"\$7.60
Ex-Large 26"\$11.95

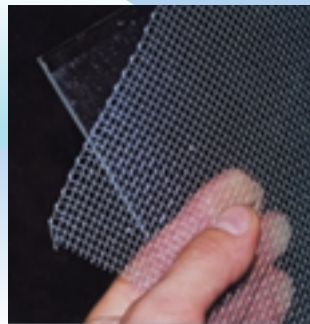
Curved Scissors

The BEST taxidermy prep scissors anywhere by Dan Rinehart. Perfect for fine detailing and edge control. Great for fish, birds and mammals.
Curved Scissors.....\$13.39



Jumbo Paper Clips

Paper Clips w/ Ridges
Box of 100.....\$1.50



Dan's Fin Carding System **REUSABLE!**

Dan's re-useable carding material saves time and money. Having tested virtually all forms of carding material, Dan exclusively uses his flexible-plastic/wire-mesh system on all his fish mounts. Dan's system consists of a 1/8" clear plastic with incredible memory for fin shaping combined with rust-proof wire mesh for quick drying.
Fin- Plastic Carding (flexible w/memory)1"x4" sheet....\$7.99
Fin- Mesh wire (rust-proof)1"x3" sheet.....\$3.99
Fin Carding System (1- 1"x3" Fin Mesh, 1 1"x4" Fin Plastic, 1 box (100 paper clips).....\$9.79

AVES®



Apoxie® Clay
Apoxie® Clay 1 lb.....\$13.00



Apoxie® Sculpt
Natural Cream 1 lb.....\$10.00
Natural Cream 4 lbs.....\$23.00

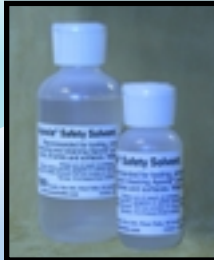
Colored:
White 1 lb.....\$10.00
Black 1 lb.....\$10.00
Brown 1 lb.....\$10.00
Pink 1 lb.....\$10.00



Critter Clay™
The Premium Self-Hardening Clay!
Critter Clay is the #1 choice of taxidermists and professionals worldwide!
Mammal Clay-Natural Earth Tone
Critter Clay 5 lbs.....\$12.00
Critter Clay 25 lbs.....\$42.00
Fish Clay-White
White Critter Clay 1 lb.....\$3.50
White Critter Clay 5 lbs.....\$12.00
White Critter Clay 25 lbs.....\$39.95



Master Mache™
Master Mache™ is a concentrated, non-toxic, no asbestos mache, ready for use with the addition of water. Set time neat (without filler) is 2 hours. Master Mache is very strong and versatile. It has a grey body. Master Mache can be used with fillers up to 50% by volume.
Master Mache™ 5 lbs.....\$12.00
Master Mache™ 25 lbs.....\$43.75



Apoxie® Safety Solvent
A Safer Solvent!
Apoxie Safety Solvent is recommended for tooling, smoothing, texturing, and quickly cleaning Apoxie products from tools, brushes and surfaces. Water clean-up.
Apoxie® Safety Solvent 2 fl. oz.....\$4.00
Apoxie® Safety Solvent 4 fl. oz.....\$7.00

Aves Apoxie® Paste - Deer Ear Epoxy
Aves Studio is proud to announce Apoxie Paste, an innovative new product that permanently fills, bonds, seals and repairs most materials. Apoxie Paste is a 2-part medium similar to Apoxie® Sculpt, but is semi-fluid. This all-purpose paste is stir-able, yet thick enough that it tends to stay put. GREAT for bonding deer ears to ear.
Apoxie® Paste 8 fl. oz.....\$14.00
Apoxie® Paste 32 fl. oz.....\$32.00



Lifetone Paints

Acrylic/Lacquer



Number	Product	8oz.	Number	Product	8oz.
100	Basecoat Sealer	6.30	503	Saifish Blue	7.40
200	Gloss Topcoat	6.30	504	Pale Blue	7.40
300	Satin Topcoat	6.30	505	Turkey Blue	7.40
500	Gold Toner	7.40	601	Jet Black	7.40
900	Thinner	6.30	602	Paynes Gray	7.40
901	Retarder	6.30	603	Neutral Gray	7.40
903	Flattig Concentrate	7.40	701	Off White	7.40
101	Gill Red	7.40	702	Pure White	7.40
102	Natural Flesh	7.40	703	Ivory White	7.40
103	Dusty Pink	7.40	704	Bass Belly White	7.40
104	Dark Red	7.40	801	Vivid Orange	7.40
105	Red Violet	7.40	802	Mallard Orange	7.40
106	Mars Red	7.40	803	Arctic Orange	7.40
107	Bright Flesh	7.40	911	Iridescent Red	8.20
201	Rich Brown	7.40	912	Red Pearlescent	9.30
202	Burnt Sienna	7.40	921	Brown Pearlescent	9.30
203	Dark Brown	7.40	931	Iridescent Gold	8.20
204	Mallard Tan	7.40	932	Gold Pearl	7.40
205	Cocoa Brown	7.40	933	Bronze Metallic	7.40
206	Buckskin Tan	7.40	934	Gold Sparkle	7.40
301	Bright Yellow	7.40	941	Iridescent Green	8.20
302	Golden Yellow	7.40	942	Bass Green Metallic	9.30
303	Yellow Ochre	7.40	943	Green Pearlescent	9.30
304	Wood Duck Yellow	7.40	951	Iridescent Blue	8.20
353	Trans. Amber Oxide	7.40	952	Violet Pearlescent	9.30
401	Light Green	7.40	953	Blue Pearlescent	9.30
402	Medium Green	7.40	954	Turquoise Pearlescent	9.30
403	Dark Green	7.40	961	Gray Pearlescent	9.30
404	Black Green	7.40	971	Silver Metallic	7.40
451	Trans. Light Green	7.40	972	Silver Pearl	7.40
452	Trans. Med. Green	7.40	973	White Pearl	7.40
453	Trans. Dark Green	7.40	974	Chrome	7.40
454	Trans. Bright Green	7.40	975	Chrome Pearlescent	9.30
501	Ocean Blue	7.40	981	Orange Pearlescent	9.30
502	Deep Violet	7.40	982	Copper Pearlescent	9.30

Shipping Charges .20 per bottle-no C.O.D.s on Paints

Dan Rinehart International Champion Fish Painting Schedules

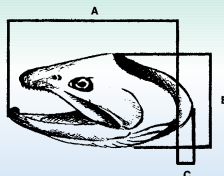
Get the Paint-Schedules that made Dan an International Champion. Each Paint-Schedule takes you step-by-step through the coloration as well as airbrush application for each species. Buy one of Dan's paint schedules and you still have a question? No problem! Just give Dan a call and get personal help from someone you know!

Cold Water Species Description	Price
Cold Water Booklet (26 Paint schedules- listed below)	\$21.10
Trout	
Rainbow Trout	\$1.60
Brown Trout	\$1.60
Great Lakes Brown	\$1.60
Steelhead	\$1.60
Tiger Trout	\$1.60
Brook Trout	\$1.60
Lake Trout	\$1.60
Cutthroat Trout	\$1.60
Yellowstone	\$1.60
Coastal	\$1.60
Lahontan	\$1.60
West Slope	\$1.60
Snake River	\$1.60
Char	
Brook Trout	\$1.60
Splake	\$1.60
Lake Trout	\$1.60
Bull Trout	\$1.60
Dolly Varden	\$1.60
Arctic Char (spawning)	\$1.60
Salmon	
Chinook (king)	\$1.60
Coho	\$1.60
Sockeye (spawning)	\$1.60
Chum (spawning)	\$1.60
Pink Salmon	\$1.60
Rare Species	
Arctic Grayling	\$1.60
Inconnu	\$1.60
Taimen	\$1.60
Warm Water Species Description	Price
Warm Water Booklet (26 species listed below)	\$21.10
Large Mouth Bass	\$1.60
Small Mouth Bass	\$1.60
White Bass	\$1.60
Striper	\$1.60
Rock Bass (red-eye)	\$1.60
Wiper (hybrid Striper / White Bass)	\$1.60
Warmouth Bass	\$1.60
Perch	\$1.60
Walleye	\$1.60
Sauger	\$1.60
Musky	\$1.60
Tiger Musky	\$1.60
Northern Pike	\$1.60
Chain Pickerel	\$1.60
Redfin Pickerel	\$1.60
Bluegill	\$1.60
Crappie	\$1.60
Redear Sunfish	\$1.60
Pumpkinseed	\$1.60
Blue Catfish	\$1.60
Channel Catfish	\$1.60
Flathead Catfish	\$1.60
Brown Bullhead	\$1.60
Black Bullhead	\$1.60
Yellow Bullhead	\$1.60
Carp	\$1.60

TOLL-FREE 1-866- 296- AQUA (2782)



Dan's Artificial Fish Heads



MEASUREMENT KEY

- A - Tip of Jaw to Back of Gill Cover
- B - Top of Head to Bottom of Head
- C - Gill Cover Width

ABBREVIATION KEY

- Hj - Hook Jaw
- F - Female
- M - Male
- E - Either Male or Female
- CM - Closed Mouth

No. A B C PRICE EYE

BROOK TROUT

BKTE048	2½	1½	1½	\$8.40	10MM
BKTM065	2½	1½	1½	\$8.40	10MM
BKTM066CM	2½	1½	1½	\$8.40	10MM
BKTE101	2½	1½	1½	\$9.90	10MM
BKTE045	3½	2½	1½	\$9.90	10MM
BKTE044	3½	2½	1½	\$9.90	12MM
BKTM154HJ	3½	2½	2½	\$9.90	12MM
BKTE100	3½	2½	2½	\$9.90	12MM
BKTM143HJ	3½	2½	2½	\$9.90	12MM
BKTE099	4½	2½	2½	\$11.70	12MM
BKTM098	4½	3	2½	\$11.70	12MM
BKTM116HJ	4½	3½	2½	\$11.70	12MM
BKTM046	4½	3	2½	\$12.95	14MM
BKTM064HJ	5½	3	3½	\$13.95	14MM
BKTM145HJ	5½	3½	2½	\$13.95	14MM

KING SALMON

KGF031	8	5½	4½	\$19.75	18MM
KGF130	9	6	5½	\$19.75	18MM
KGF024	9½	6½	5½	\$21.60	18MM
KGF076	10	6½	5½	\$21.60	18MM
KGM108HJ	10	6½	5½	\$21.60	18MM
KGM081HJ	10½	6½	5½	\$21.60	18MM
KGM133HJ	12	8	7	\$25.95	18MM

LAKE TROUT

LTE043	5½	3½	3½	\$18.50	14MM
LTE054	6½	4	3½	\$18.50	14MM
LTE056	7	3½	3½	\$18.50	16MM
LTE134	7½	4	4½	\$18.50	16MM
LTE010	7½	4½	4½	\$19.30	16MM
LTE011	8½	4½	4½	\$19.30	16MM
LTE082	9	5½	5½	\$19.85	18MM
LTE078	9½	6½	5½	\$19.85	18MM

KOKANEE SALMON

KSM167HJ	4½	2½	1½	\$10.95	14MM
KSM168HJ	5	2½	2	\$10.95	14MM
KSM017HJ	5½	2½	1½	\$10.95	14MM
KSM018HJ	6½	3½	2½	\$11.95	14MM
KSM019HJ	6½	3½	2½	\$12.95	14MM

SILVER SALMON

SS055	5½	3½	3	\$14.50	14MM
SSM095HJ	6	4½	3½	\$14.50	14MM
SSF091	6½	3½	4	\$14.50	14MM
SSM030	7½	4½	3½	\$18.05	16MM
SSM094HJ	7½	4½	4	\$18.05	16MM

SOCKEYE SALMON

SKS073	6½	3½	2½	\$12.95	14MM
SKM092HJ	8½	4½	3½	\$16.95	14MM

CHUM "DOG" SALMON

CHF096	6½	3½	3½	\$16.25	14MM
CHM093	6½	4½	3½	\$18.80	14MM

PINK "HUMPY" SALMON

PSM112HJ	6½	3½	3	\$17.05	14MM
----------	----	----	---	---------	------

GRAYLING

GRE155	2½	1½	1½	\$7.95	12MM
GRE036	3½	2½	1½	\$9.95	12MM

NORTHERN PIKE

PKE167	8½	3½	3½	\$16.95	18MM
PKE062	10½	4½	4½	\$19.95	18MM
PKE079	11½	5½	7½	\$28.95	18MM
PKE132	14	6	5½	\$32.95	18MM



CUTTHROAT

CTE067	2	1½	1	\$10.70	10MM
CTE066CM	2½	1½	1½	\$10.70	10MM
CTE072	2½	2	1½	\$10.70	10MM
CTE097	3	2½	1½	\$10.70	12MM
CTE035	3½	2½	2½	\$11.70	12MM
CTE042	4½	3	2½	\$11.70	14MM
CTE001	4½	3½	2½	\$11.70	14MM

STRIPER

STE086	6½	4½	3½	\$15.95	16MM
STE083	8½	4½	5½	\$17.95	18MM
STE122	11	6½	6½	\$27.95	20MM
STE113	11½	7	7½	\$29.95	22MM
STE114	12½	7½	7½	\$33.95	24MM
STE131	15	8½	9½	\$49.95	24MM

DOLLY VARDEN

DVM110HJ	7½	4½	3½	\$15.95	8MM
----------	----	----	----	---------	-----

WALLEYE

WALO88	4½	2½	2½	\$10.95	8MM
WAL089	6½	4	4½	\$12.95	14MM
WAL151	7½	4½	4½	\$13.95	12MM
WAL157	7½	4½	4½	\$14.95	12MM

Dan's Artificial Fish Heads

No. A B C PRICE EYE

RED FISH

RF166	6	4	3	\$15.95	10MM
RF158CM	7	4	3	\$14.95	12MM
RF163	7	4	4	\$17.95	12MM
RF164	8	5	5	\$20.95	12MM
RF169	9	5½	6	\$25.95	14MM
RF173	9½	6½	5½	\$28.95	14MM
RF165	10	6	7	\$29.95	12MM
RF172	11½	7½	7½	\$34.95	12MM

LARGEMOUTH BASS

SMB139	5½	3½	3	\$12.95	10MM
SMB135CM	5½	3½	3	\$10.95	12MM

SEA TROUT

SET162	6½	3½	3½	\$14.95	10MM
SET168	6½	3½	3½	\$14.95	12MM
SET159	7½	3½	3½	\$14.95	10MM
SET160	7½	4	4½	\$14.95	12MM
SET160	8	4½	4½	\$15.95	12MM



BROWN TROUT

BTM049	2½	1½	1½	\$8.40	10MM
BTE013	3½	2½	1½	\$8.40	12MM
BTE022	3½	2½	2½	\$11.70	12MM
BTE016	4	2½	2	\$11.70	12MM
BTE032	4½	2½	2½	\$11.70	14MM
BTE038	4½	3½	2½	\$12.45	14MM
BTM071HJ	4½	2½	2	\$12.45	12MM
BTM070HJ	4½	3	2½	\$12.45	12MM
BTM144HJ	5½	3½	3	\$12.45	14MM
BTM037HJ	5½	3	2½	\$12.45	14MM
BTE023	5½	3½	2½	\$12.45	14MM
BTE026	5½	3½	2½	\$14.00	14MM
BTE008	5½	3½	3	\$14.00	14MM
BTM117HJ	5½	3½	2½	\$14.00	14MM
BTE084	5½	3½	3½	\$14.00	14MM
BTM027HJ	6	3½	3½	\$14.25	14MM
BTM069HJ	6½	3½	2½	\$14.25	14MM
BTM009HJ	6½	3½	3	\$14.25	14MM
BTE041	6½	4½	3	\$15.25	16MM
BTM110HJ	7½	4½	3½	\$15.25	16MM
BTM120HJ	7½	4½	3½	\$16.25	16MM
BTM080HJ	7½	4½	3½	\$16.25	16MM
BTM115HJ	7½	4½	4	\$17.05	16MM
BTM118HJ	7½	4½	3½	\$18.05	16MM
BTM029	8	4½	3½	\$19.25	16MM

RAINBOW TROUT-STEELHEAD

RTE053	2	1½	1½	\$8.40	8MM
RTE052	2½	1½	1½	\$8.40	10MM
RTE015	3	2	1½	\$8.40	12MM
RTE097	3	2	1½	\$9.50	12MM
RTE050	3½	2½	1½	\$9.50	12MM
RTE014	3½	2½	1½	\$9.50	12MM
RTE127	3½	2½	1½	\$9.50	12MM
RTE156	3½	2½	2	\$9.90	14MM
RTE057	3½	3	2	\$9.90	14MM
RTE025	3½	3	2	\$9.90	12MM
RTE075	4	3½	2½	\$10.70	12MM
RTE040	4	2½	2½	\$10.70	14MM
RTE125	4½	2½	2½	\$10.70	14MM
RTM146HJ	4½	2½	2½	\$11.70	14MM
RTE005	4½	3	2½	\$11.70	12MM
RTM058	4½	3½	2½	\$11.70	12MM
RTE124	4½	3	2½	\$11.95	14MM
RTM002HJ	4½	2½	2½	\$11.95	12MM
RTM060CM	4½	3½	2½	\$11.95	12MM
RTM059	4½	3½	2½	\$11.95	12MM
RTE153	4½	3½	2½	\$11.95	12MM
RTE152	4½	3½	3	\$11.95	12MM
RTE003	4½	3½	2½	\$11.95	14MM
RTE061CM	4½	2½	2½	\$11.95	14MM
RTM004	4½	3½	2½	\$12.45	14MM
RTE126	4½	3	2½	\$12.45	14MM
RTM021HJ	4½	3	2½	\$12.45	14MM
RTE007	4½	3½	2½	\$12.45	14MM
RTE150	5	3½	3	\$12.95	14MM
RTM034HJ	5	3½	2½	\$12.95	14MM
RTE039	5	3	3	\$12.95	14MM
RTE077	5½	3½	2½	\$12.95	14MM
RTE033	5½	4½	3½	\$13.45	14MM
RTE074	5½	3½	3½	\$13.45	14MM
RTE102	5½	3½	2½	\$13.45	14MM
RTM012HJ	5½	3½	3	\$13.45	14MM
RTM147HJ	5½	4	3	\$13.45	14MM
RTM149	5½	4	3½	\$13.45	14MM
RTE090	5½	3½	3½	\$14.00	14MM
RTM103HJ	5½	3½	2½	\$14.00	16MM
RTE109	6½	3½	3½	\$15.25	16MM
RTM051HJ	6½	4	3	\$15.25	16MM
RTE028	6½	4	4	\$15.25	16MM
RTM104HJ	6½	4½	3½	\$17.05	16MM
RTM148HJ	7	4½	3½	\$17.05	18MM
RTM105HJ	7½	4½	3½	\$17.05	18MM
RTM106HJ	7½	4½	3½	\$17.05	18MM
RTM107HJ	9	5½	4½	\$19.30	18MM





Semi-Sneak Whitetail Manikins by World Champion Gene Smith

by World Champion Gene Smith



Measuring Chart



Glass Whitetail Eyes

Developed by Dan with Photographic Re-Imaging! The same technology that created Dan's revolutionary Aqua Eyes for fish has made this NEW Whitetail eye possible. Dan uses photographic re-imaging to make these revolutionary deer eyes. The actual photographic image is three dimensionally fused into the glass lens. The result is a deer eye with living vibrancy.

Whitetail (32mm).....\$8.40

Number	Position	Sizes AxBxC	Price
W02-6317L	Left Turn	6 3/4 x17 1/2x19	\$33.00
W02-6317R	Right Turn	6 3/4 x17 1/2x19	\$33.00
W02-7018L	Left Turn	7x18x20	\$33.00
W02-7018R	Right Turn	7x18x20	\$33.50
W02-7119L	Left Turn	7 1/4x19 1/2x22	\$34.00
W02-7119R	Right Turn	7 1/4x19 1/2x22	\$34.00
W02-7221L	Left Turn	7 1/2x21x24	\$34.50
W02-7221R	Right Turn	7 1/2x21x24	\$34.50
W02-7322L	Left Turn	7 3/4x22x26	\$35.00
W02-7322R	Right Turn	7 3/4x22x26	\$35.00



Upright Whitetail Manikins by World Champion Gene Smith

by World Champion Gene Smith



Whitetail Ear liners

Competition quality for the Professional! Created by World Champion, Brad Eppley, These NEW whitetail ear liners offer the most realistic ear and ear base anatomy for the professional taxidermist. Now you can have both affordability and quality in your whitetail ear liners. Try them and experience the difference for the same low price!



Medium Whitetail Earliner (pair).....\$5.75

Large Whitetail Earliner (pair).....\$5.85

Number	Position	Sizes AxBxC	Price
W01-6317S	Straight	6 3/4 x17 1/2x19	\$33.00
W01-6317R	Right Turn	6 3/4 x17 1/2x19	\$33.00
W01-6317L	Left Turn	6 3/4 x17 1/2x19	\$33.00
W01-7018S	Straight	7x18x20	\$33.00
W01-7018R	Right Turn	7x18x20	\$33.50
W01-7018L	Left Turn	7x18x20	\$33.50
W01-7119S	Straight	7 1/4x19 1/2x22	\$34.00
W01-7119R	Right Turn	7 1/4x19 1/2x22	\$34.00
W01-7119L	Left Turn	7 1/4x19 1/2x22	\$34.00
W01-7221S	Straight	7 1/2x21x24	\$34.50
W01-7221R	Right Turn	7 1/2x21x24	\$34.50
W01-7221L	Left Turn	7 1/2x21x24	\$34.50
W01-7322S	Straight	7 3/4x22x26	\$35.00
W01-7322R	Right Turn	7 3/4x22x26	\$35.00
W01-7322L	Left Turn	7 3/4x22x26	\$35.00

TOLL-FREE 1-866- 296- AQUA (2782)



Bird Manikins

by Steve Henthorn

NEW Bird Manikins by Steve Henthorn

Steve Henthorn became Head-Instructor at the Dan Rinehart Taxidermy School for GOOD reason; HE KNOWS HIS STUFF! In particular, Steve is an exceptional bird taxidermist. With International Bird Taxidermy Championships to his credit, Steve is one of the nation's finest taxidermists. Steve and Dan joined together in offering you these beautiful NEW bird manikins. Each manikin is sculpted with a recessed neck cavity, detailed anatomy and leg/wing wire attachment points indicated. Higher quality manikins equals better and easier results for you!



Length Measurement



End-To-End (Full Length)

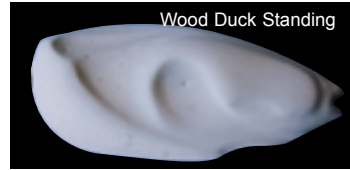
Girth Measurement



Thickest Girth Circumference

Wood Duck Standing

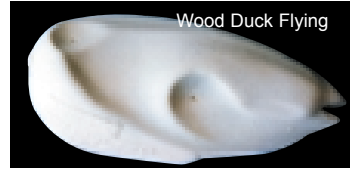
	Size	Length	Girth	Price
WDSS	Small	6 1/4"	8 1/2"	\$5.75
WDSM	Medium	6 1/2"	9"	\$5.86
WDSE	Large	7"	9 1/2"	\$5.96



Wood Duck Standing

Wood Duck Flying

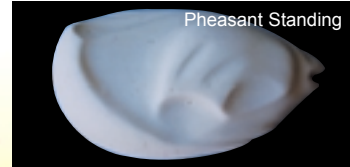
	Size	Length	Girth	Price
WDFS	Small	6 1/4"	8 1/2"	\$5.75
WDFM	Medium	6 1/2"	9"	\$5.85
WDFL	Large	7"	9 1/2"	\$5.95



Wood Duck Flying

Pheasant Standing

	Size	Length	Girth	Price
PSS	Small	7 1/2"	12 1/2"	\$5.75
PSM	Medium	8"	13"	\$5.85
PSL	Large	8 1/2"	13 1/4"	\$5.95



Pheasant Standing

Pheasant - Flying

	Size	Length	Girth	Price
PFS	Small	7 1/2"	12 1/4"	\$5.75
PFM	Medium	8"	13"	\$5.85
PFL	Large	8 1/2"	13 1/4"	\$5.95



Pheasant Flying

Mallard Standing

	Size	Length	Girth	Price
MSS	Small	8"	11 1/4"	\$5.75
MSM	Medium	8 1/2"	12"	\$5.85
MSL	Large	8 3/4"	13"	\$5.95



Mallard Standing


Mallard Flying

	Size	Length	Girth	Price
MFS	Small	8"	11 1/4"	\$5.75
MFM	Medium	8 1/2"	12"	\$5.85
MFL	Large	9"	13"	\$5.95



Mallard Flying

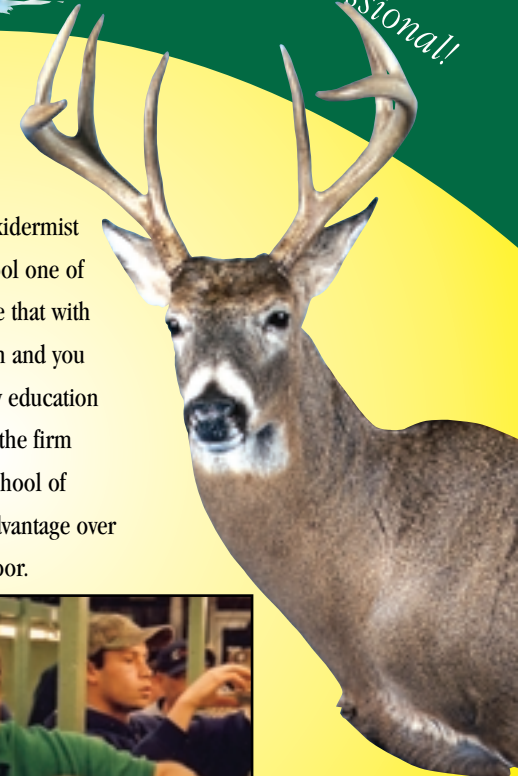
Dan Rinehart Taxidermy School

When You're Serious About  Becoming a Professional!

Sponsored by

VAN DYKE'S

Dan's reputation as an accomplished Master Taxidermist and his years of teaching experience makes his school one of the foremost taxidermy schools in the nation. Couple that with the National Award winning talents of Steve Henthorn and you have a taxidermy school that will give you the quality education needed to be successful in the taxidermy field. With the firm educational foundation provided by Dan Rinehart School of Taxidermy, the new taxidermist has a tremendous advantage over those attempting to start taxidermy on the ground floor.



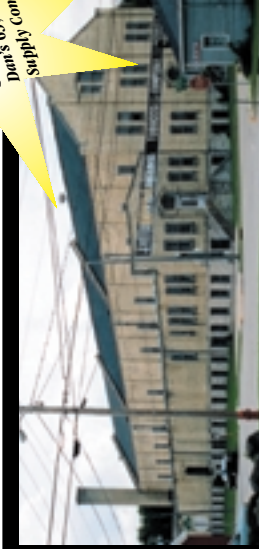
Dan Rinehart Taxidermy School
203 South Main St. • Edgerton, WI 53534

1-866-296-2782
Toll-Free

Visit us at LearnTaxidermy.com

Dan Rinehart Taxidermy Supply Co.
203 South Main Street
Edgerton, WI 53534
608-884-3047
www.LearnTaxidermy.com

NEW!
Dan's 63,000 sq. ft.
Supply Company



***Dan Rinehart's 63,000 square feet of World Class
Taxidermy Training and Supply Facility***

Dan's new taxidermy training/supply studio provides over 63,000 square feet of taxidermy training, supply storage and endless research and development. In 1912 the heart of the tobacco industry was located in Edgerton, Wisconsin. Giant warehouses were built on solid brick foundations with massive timber interiors. Today, the Biggest of the BIG warehouses is the new home to Dan Rinehart Taxidermy School and Studios. This beautiful building combines a historic-rustic atmosphere with state-of-the-art taxidermy school and supply production facility. Come visit us and enjoy the history of yesteryear and the most advanced supplies and techniques of today!

***Revolutionary Products
Never Seen Before!***

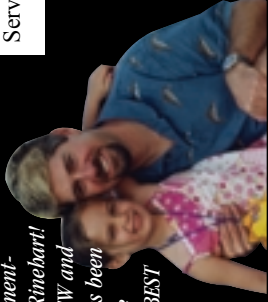
Just when you thought that the taxidermy industry was being consolidated by faceless monopoly oriented Investment-

Bankers, here we are, Dan and Sophia (daughter) Rinehart!

We are excited to enter the supply industry with NEW and Revolutionary products. Personal service has always been the corner-stone of the taxidermy industry. You are important at DRTS and will receive the industries BEST products and personalized customer service.

.....Talk to you soon.

---Dan & Sophia Rinehart



PRSR STD
U.S. Postage
PAID
A.M. Mailing
Services, Inc.

ALL NEW The Most Accurate Fish Eyes & Manikins EVER! ALL NEW